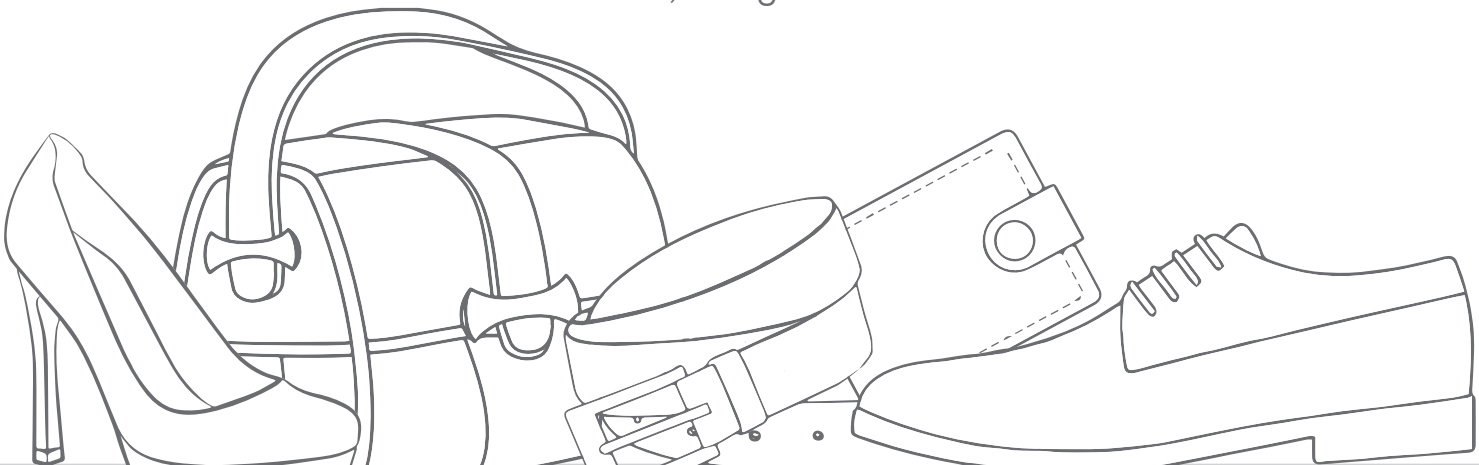


Bangladesh  
Leather Footwear  
& Leathergoods  
International  
Sourcing Show 2017



Nov 16-18, 2017

Dhaka, Bangladesh





# Welcome to the maiden edition of BLLISS –2017

Diversification of exports is one of the key factors influencing the economic growth of Bangladesh. The leather sector is the second largest export earner for the country. Bangladesh is rapidly emerging as a popular destination for the sourcing of leather goods and footwear. We invite you to join us at the first ever **Bangladesh Leather Footwear and Leathersgoods International Sourcing Show (BLLISS) 2017** which will showcase the country's strength in this sector.

## Date & Venue

16-18 November 2017.  
International Convention City  
Bashundhara (ICCB),  
Dhaka, Bangladesh.

**Sheikh Hasina**, MP, the Honourable Prime Minister of the People's Republic of Bangladesh will inaugurate this grand event on 16 November 2017.

# TARGET AUDIENCE

Brands, buyers, designers, fashion experts, industry leaders, sourcing agents, consultants & distributors are the target audience for this show.



## EVENTS

- Opening ceremony on 16 November which the Honourable Prime Minister of the People's Republic of Bangladesh will inaugurate.
- Trade show featuring 7 pavilions and 20 stands showcasing leather footwear and leather goods that are being made in Bangladesh.
- 3 breakout sessions focusing on key industry issues.
- Networking dinner on 17 November which will provide opportunities for dialogue with industry leaders.

Participation in BLLISS will give you the opportunity to establish relationships with the best leather footwear and leather goods and accessories factories in Bangladesh. Since Bangladesh is one of the largest growing hubs for manufacturing, this first edition of BLLISS will provide you with the unique chance to get into the market early and create connections with the best manufacturers in the business.

Enjoy one-stop sourcing at BLLISS 2017 and establish business relationships with some of the leading OEMs, ODMs and OBMs from this fast growing production hub in the region.

The exhibitors participating in BLLISS are the pioneering leather footwear and leather goods factories in Bangladesh with internationally compliant world class production facilities. BLLISS will provide a platform for the manufacturers and buyers to meet and discuss possibilities for future business collaborations.

As a participant in BLLISS 2017, you can participate in the "Buyer-Seller Meets", take part in factory visits to get a first-hand look at the factories and get in-depth knowledge on ancillary services available in Bangladesh, such as internationally accredited testing facilities for product and leather testing. You can also gain information on the benefits of sourcing from Bangladesh compared to other Asian countries.



# WHY SOURCE FROM BANGLADESH?

- Availability of local raw material – 310 million sqft of leather is produced in Bangladesh annually.
- Leather produced in Bangladesh has a reputation of high quality due to the size of the livestock and absence of commercial farming which ensures that the cattle are well taken care of.
- Bangladesh has already established itself as the 2nd largest destination for RMG production and is one of the fastest growing destinations for leather and leather product sourcing.
- Tariff and quota free access to the European Union (GSP), Canada, Australia & Japan.
- Shipment facilities by frequently available air and sea port.

# BENEFITS OF SOURCING FROM BLLISS

- Enjoy one-stop sourcing at BLLISS from some of the leading producers of leather footwear and leathersgoods from Bangladesh
- Establish business relationships with some of the leading OEMs, ODMs and OBMs from this fast growing production hub in the region.
- Participate in our on-site fringe programs and activities including seminars on fashion and business trends.
- Catch up with factory visit.



# EXHIBITOR PROFILE: MANUFACTURERS & EXPORTERS

## FOOTWEAR

A range of children, men & women shoemakers, will be showcasing their latest collections & fashionable items such as: boots & high tops, pumps, flats oxfords, loafers, sports footwear, sneakers etc.

## BAGS & ACCESSORIES

A handful of leathersgoods manufacturers will display a wide variety of assorted leather-er items & accessories, ranging from handbags, shoulder bags, purses, pouches, wallets, briefcases, cases, travel bags, sports bags, vanity cases, belts, gloves etc.



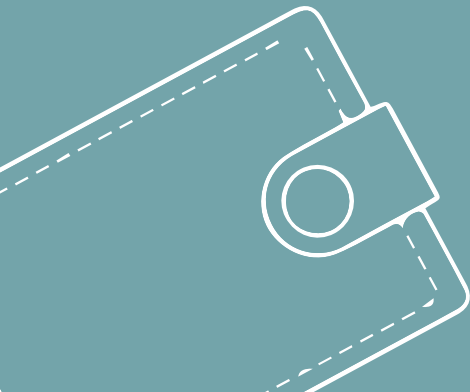
# WHY INVEST IN BANGLADESH?

- Bangladesh has a long established tanning industry which produces around 2-3% of the world's leather from a ready supply of raw materials.
- Abundant, competitive labour cost – ideal for labour intensive industry.
- Government's support in the form of tax holidays, duty free imports of raw materials and machinery for export-oriented leather market.
- Tariff and quota free access to major markets such as the EU & Japan.
- A tariff concession facility to major importing countries under Generalized System of Preferences (GSP) coverage.
- 27% annual average export growth rate over the last 4 years.
- Growing domestic market for footwear and leather articles (nearly ten million urban dwellers have annual incomes well in excess of \$10,000 offering a sizable market for a wide range of goods and services).
- Bonded warehouse facility.
- Policy supports, export credit facility, fiscal and Non fiscal incentives.

## Event organizer: Leathergoods And Footwear Manufacturers & Exporters Association of Bangladesh (LFMEAB)

Leathergoods And Footwear Manufacturers and Exporters Association of Bangladesh (LFMEAB) is the recognized trade body that represents most of the major export oriented manufacturers and exporters of leather goods and footwear in Bangladesh. LFMEAB being a proactive trade body guiding the sector by way of making strategic linkage, forging collaboration with relevant national and international institutes, materializing possible cooperation, mobilizing resources and playing a key role in advancing sustainable growth of the nation, through policy advocacy, research and innovative industry specific services.

LFMEAB has continuously been leading initiatives to support for the development of the SME clusters and value chain through quality improvement, skill development, financial management improvement, and process development, etc. LFMEAB in partnership with Centre of Excellence for Leather Skill Bangladesh (COEL), which is a dedicated skills and service solution center, catering demand and needs of the industry. It has already developed two Common Facility Centre (CFCs). The association has also undertaken a programme to implement Environmental Management Systems (EMS) and Eco-labelling schemes, which aims to establish Bangladesh as one of the leading sustainable sourcing destination in global supply chain.



Jointly organized by:



Ministry of Commerce  
Government of the People's Republic of  
Bangladesh



For further information contact:

**Leathergoods And Footwear Manufacturers  
& Exporters Association of Bangladesh**

Erectors House (9th Floor), 18, Kemal Ataturk Avenue,  
Banani C/A, Dhaka-1213 Bangladesh

Tel: 880-2-9821418-9, Fax : 880-2-9821420, E-mail : [info@lfmeab.org](mailto:info@lfmeab.org)

URL : [www.lfmeab.org](http://www.lfmeab.org)

Event  
Partner :



Transportation  
Partner :



Hospitality  
Partner : THE WESTIN  
DHAKA